

# SWIS Summary

2015–16 Academic Year

5424 Schools | 2,827,892 Students | 1,715,388 ODRs

Data Reported August 2016

## MAJORS ONLY

| Grade Range | Number of Schools | Mean Enrollment per School | Mean ODRs/100 Students/School Day | Median ODRs/100 Students/School Day | 25th Percentile ODRs/100 Students/School Day | 75th Percentile ODRs/100 Students/School Day |
|-------------|-------------------|----------------------------|-----------------------------------|-------------------------------------|--|--|
| K-6         | 3405              | 456                        | .32 (.46)                         | .20                                 | .09  | .39  |
| 6-9         | 979               | 624                        | .48 (.59)                         | .31                                 | .16  | .60  |
| 9-12        | 488               | 879                        | .52 (.78)                         | .33                                 | .17  | .62  |
| PreK-8      | 347               | 425                        | .45 (.69)                         | .28                                 | .12  | .51  |
| PreK-12     | 86                | 307                        | .60 (1.25)                        | .29                                 | .15  | .50  |

*ODR=office discipline referral; (#)=standard deviation; Shaded column=most useful for decision making*

*continued on next page*

**MINORS ONLY**

| Grade Range | Number of Schools | Mean Enrollment per School | Mean ODRs/100 Students/School Day | Median ODRs/100 Students/School Day | 25th Percentile ODRs/100 Students/School Day | 75th Percentile ODRs/100 Students/School Day |
|-------------|-------------------|----------------------------|-----------------------------------|-------------------------------------|--|--|
| K-6         | 2788              | 448                        | .46 (.63)                         | .26                                 | .10  | .57  |
| 6-9         | 773               | 597                        | .57 (.68)                         | .36                                 | .14  | .73  |
| 9-12        | 375               | 834                        | .50 (.93)                         | .22                                 | .06  | .50  |
| PreK-8      | 294               | 436                        | .70 (1.71)                        | .27                                 | .08  | .67  |
| PreK-12     | 83                | 302                        | .74 (.96)                         | .42                                 | .20  | .88  |

*ODR=office discipline referral; (#)=standard deviation; Shaded column=most useful for decision making*

**IN-SCHOOL SUSPENSIONS**

| Grade Range | Number of Schools | Mean Enrollment per School | Mean Count of Students with ISS/100 Students | Mean Count of ISS Events/100 Students | Mean Count of Days of ISS |
|-------------|-------------------|----------------------------|--|---------------------------------------|---------------------------|
| K-6         | 3405              | 456                        | 1.98 (3.49)                                  | .01 (.10)                             | 3.12 (9.94)               |
| 6-9         | 979               | 624                        | 8.42 (9.08)                                  | .06 (.25)                             | 23.04 (40.32)             |
| 9-12        | 488               | 879                        | 7.40 (8.38)                                  | .09 (.36)                             | 17.77 (26.47)             |
| PreK-8      | 347               | 425                        | 4.01 (5.55)                                  | .04 (.26)                             | 7.39 (15.49)              |
| PreK-12     | 86                | 307                        | 4.68 (6.07)                                  | .08 (.41)                             | 6.53 (12.93)              |

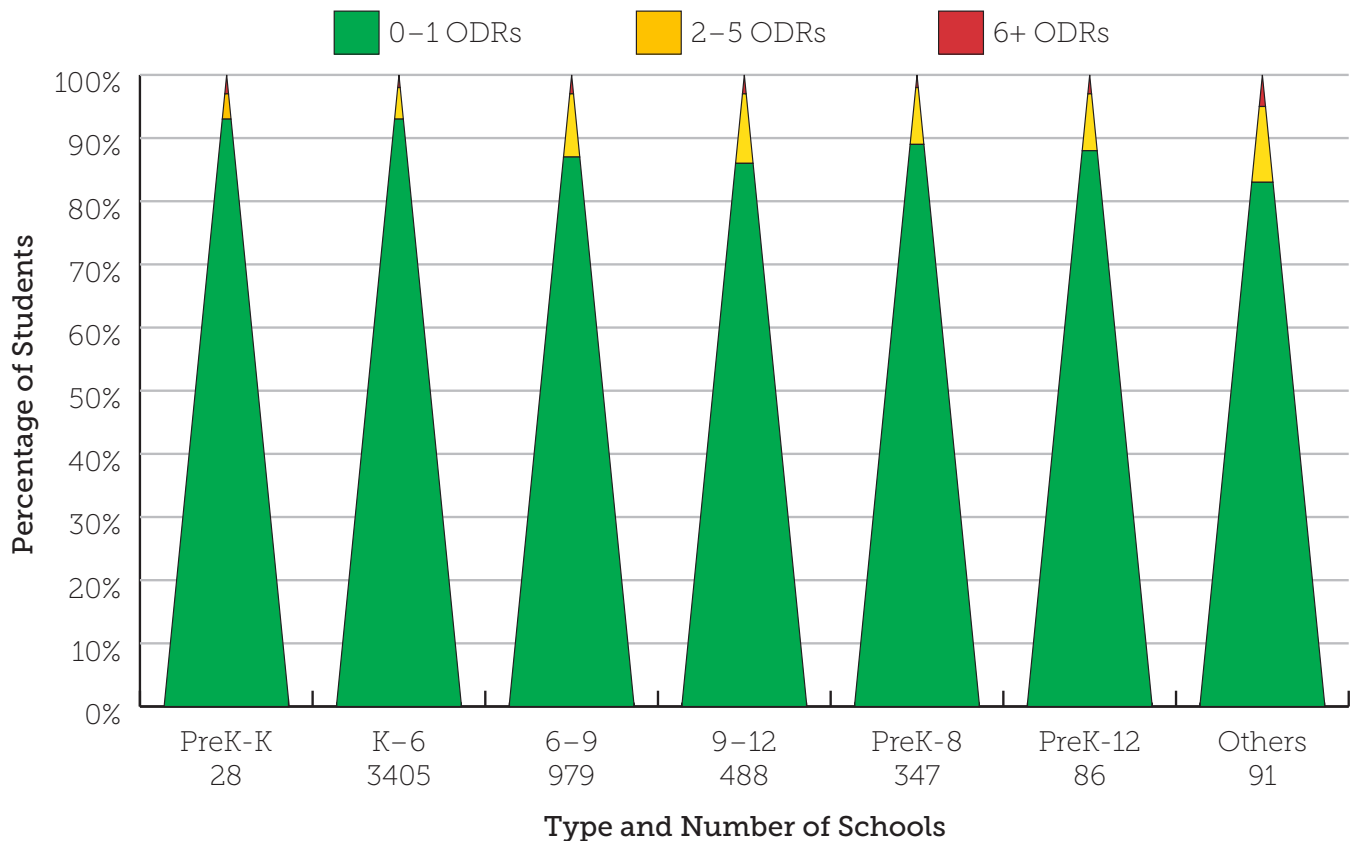
*ISS=in-school suspension; (#)=standard deviation*

### OUT-OF-SCHOOL SUSPENSIONS

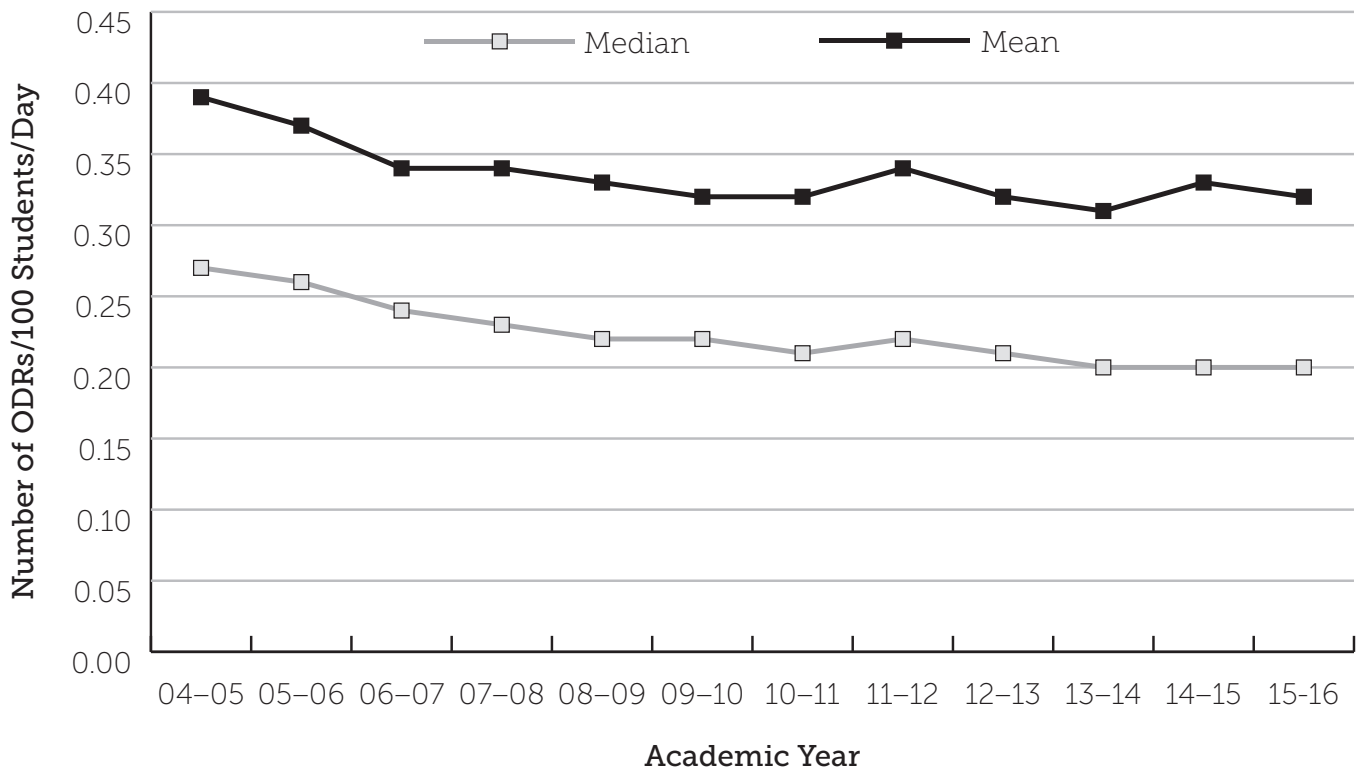
| Grade Range | Number of Schools | Mean Enrollment per School | Mean Count of Students with OSS/ 100 Students | Mean Count of OSS Events/100 Students | Mean Count of Days of OSS |
|-------------|-------------------|----------------------------|---|---------------------------------------|---------------------------|
| K-6         | 3405              | 456                        | 2.27 (3.50)                                   | 3.15 (9.75)                           | 6.21 (14.29)              |
| 6-9         | 979               | 624                        | 6.77 (6.84)                                   | 4.34 (10.58)                          | 31.38 (51.23)             |
| 9-12        | 488               | 879                        | 6.76 (7.49)                                   | 5.83 (16.39)                          | 33.01 (49.76)             |
| PreK-8      | 347               | 425                        | 5.16 (6.85)                                   | 3.34 (11.39)                          | 19.27 (35.25)             |
| PreK-12     | 86                | 307                        | 4.93 (6.46)                                   | 4.92 (10.07)                          | 16.52 (26.69)             |

OSS=out-of-school suspension; (#)=standard deviation

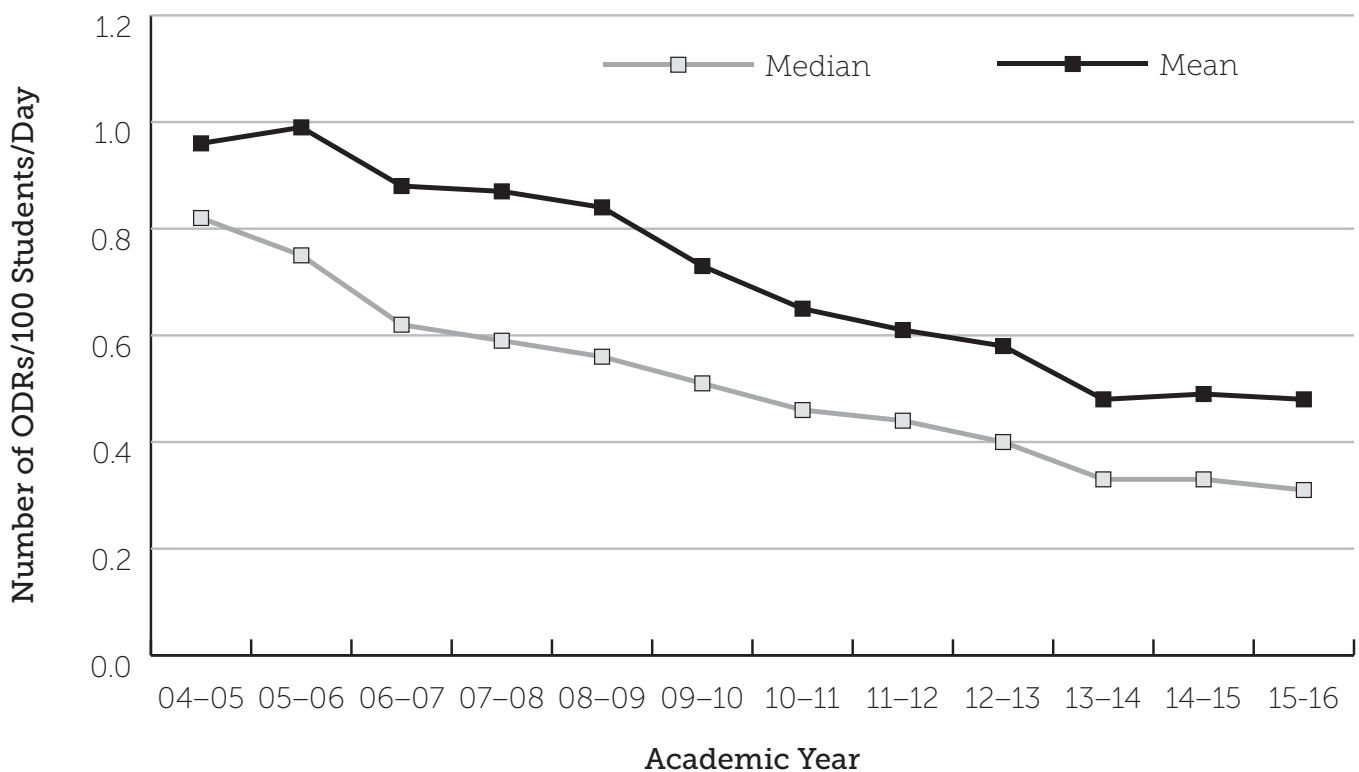
### MAJOR ODRs/GRADE LEVEL (TRIANGLE)



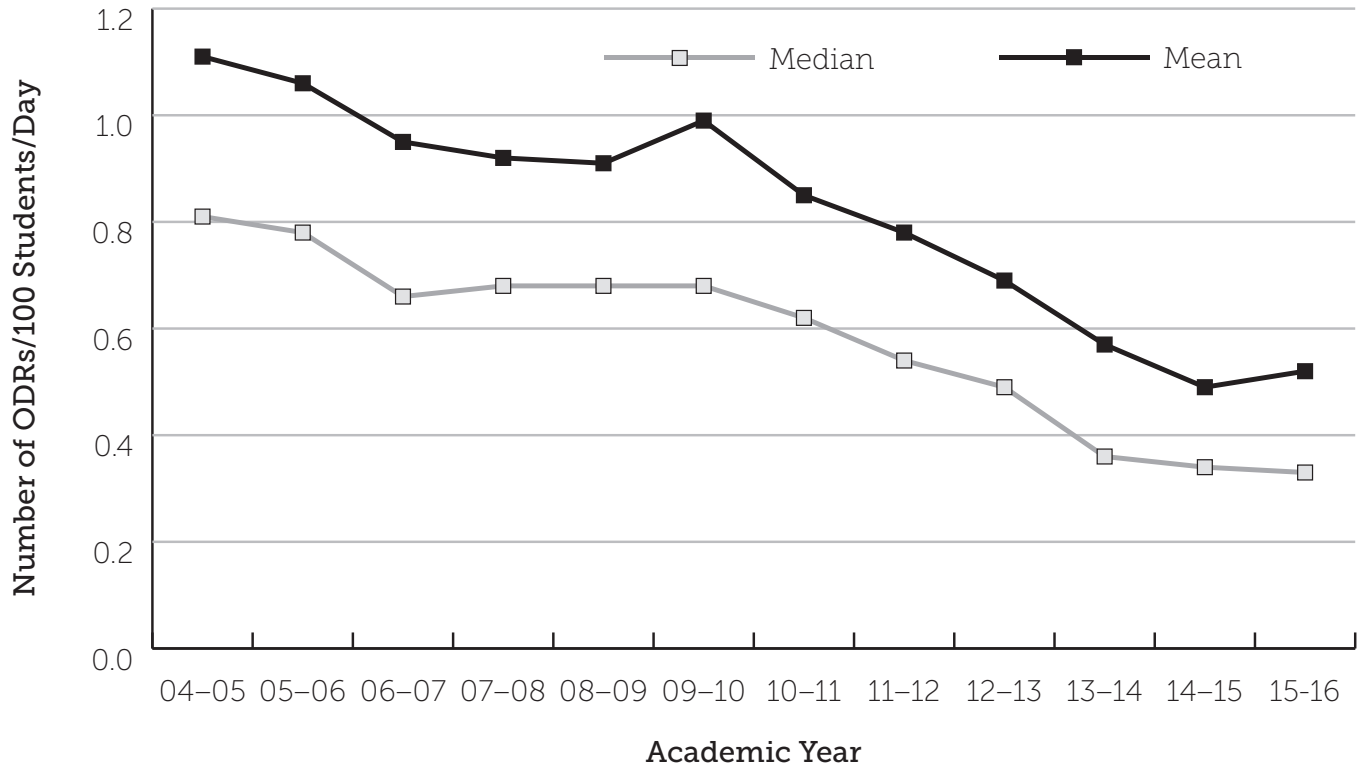
**ELEMENTARY SCHOOL HISTORICAL TREND,  
NATIONAL MEDIAN AND MEAN MAJOR ODRs/100 STUDENTS/DAY**



**MIDDLE SCHOOL HISTORICAL TREND,  
NATIONAL MEDIAN AND MEAN MAJOR ODRs/100 STUDENTS/DAY**



**HIGH SCHOOL HISTORICAL TREND,  
NATIONAL MEDIAN AND MEAN MAJOR ODRs/100 STUDENTS/DAY**



PBISApps.org is the home of web-based applications used by schools, districts, regions, and states in the US and abroad as part of their on-going decision-making processes.

Educators have been using PBISApps for over ten years to make schools safer, more

productive learning environments — empowering them to make data-based decisions in real time.

PBISApps.org is run by Educational & Community Supports, a research unit at the University of Oregon.



www.pbisapps.org | 855-455-8194