

## 2014-2015 School Climate Transformation Grant Implementation Survey Summary

Prepared by Jen Freeman & George Sugai  
OSEP TA Center on PBIS  
Dec 2015

### Background

In October 2014 the office of Safe and Healthy Students funded 12 states and 71 districts to implement a Multi-tiered Behavior Support Framework. The National PBIS Technical Assistance (TA) Center has received funding to provide technical assistance to states and districts across sites.

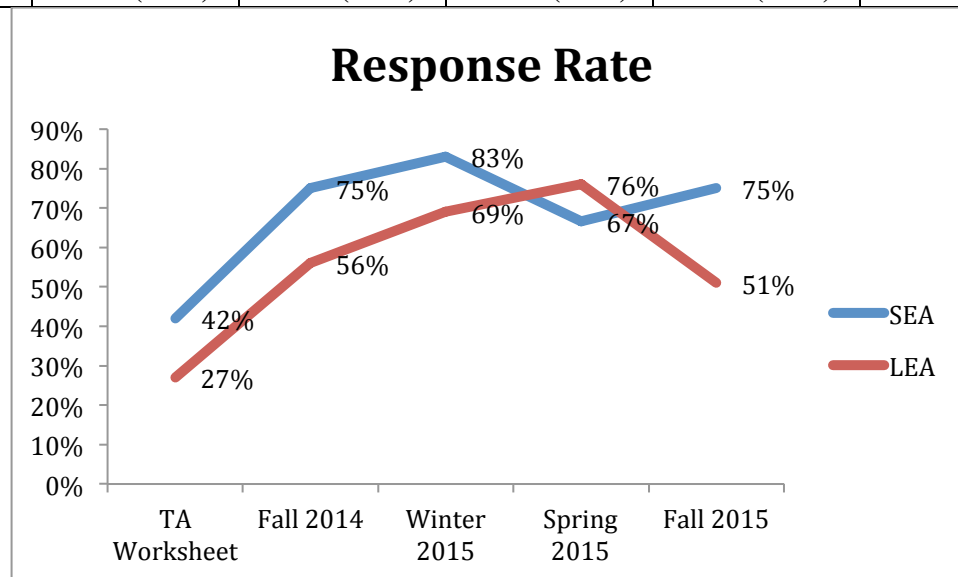
To assess the ongoing technical assistance needs and implementation status across School Climate Transformation Grant (SCTG) recipients, the National PBIS Technical Assistance (TA) Center is conducting implementation surveys three times per year (Oct/Nov, February, May/June). All SEA and LEAs were sent a link to an online survey and asked to complete this information electronically. *The purpose of this report is to summarize these data from October 1, 2014 through Nov 30, 2015 and describe how the TA center is using this information to guide the ongoing organization of TA supports across sites.*

### Implementation Survey Summary

#### Response Rate

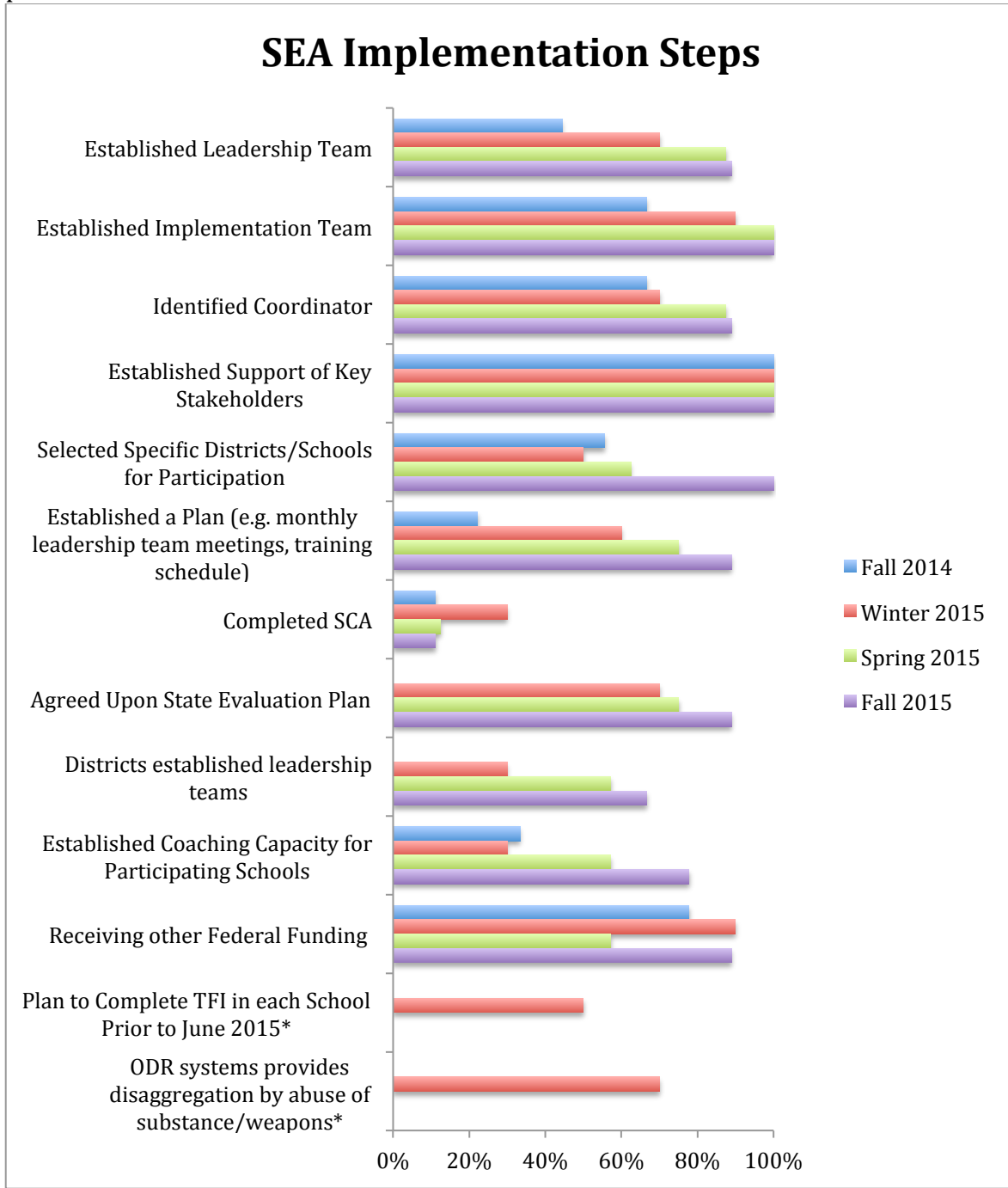
Thank you to all SEA and LEA teams who submitted worksheets and survey data by June 19. The TA center will continue to collect implementation survey data throughout the project (fall, winter and spring), and we encourage SCTG recipients to continue to discuss TA needs with their TA providers as they arise.

Number Submitted	TA Worksheet	Baseline Implementation Survey	Mid-Year Implementation Survey	End-of-Year Implementation Survey	Fall 2015 Implementation Survey
SEA	5/12 (42%)	9/12 (75%)	10/12 (83%)	8/12 (67%)	9/12 (75%)
LEA	19/71 (27%)	40/71 (56%)	49/71 (69%)	54/71 (76%)	37/71 (52%)



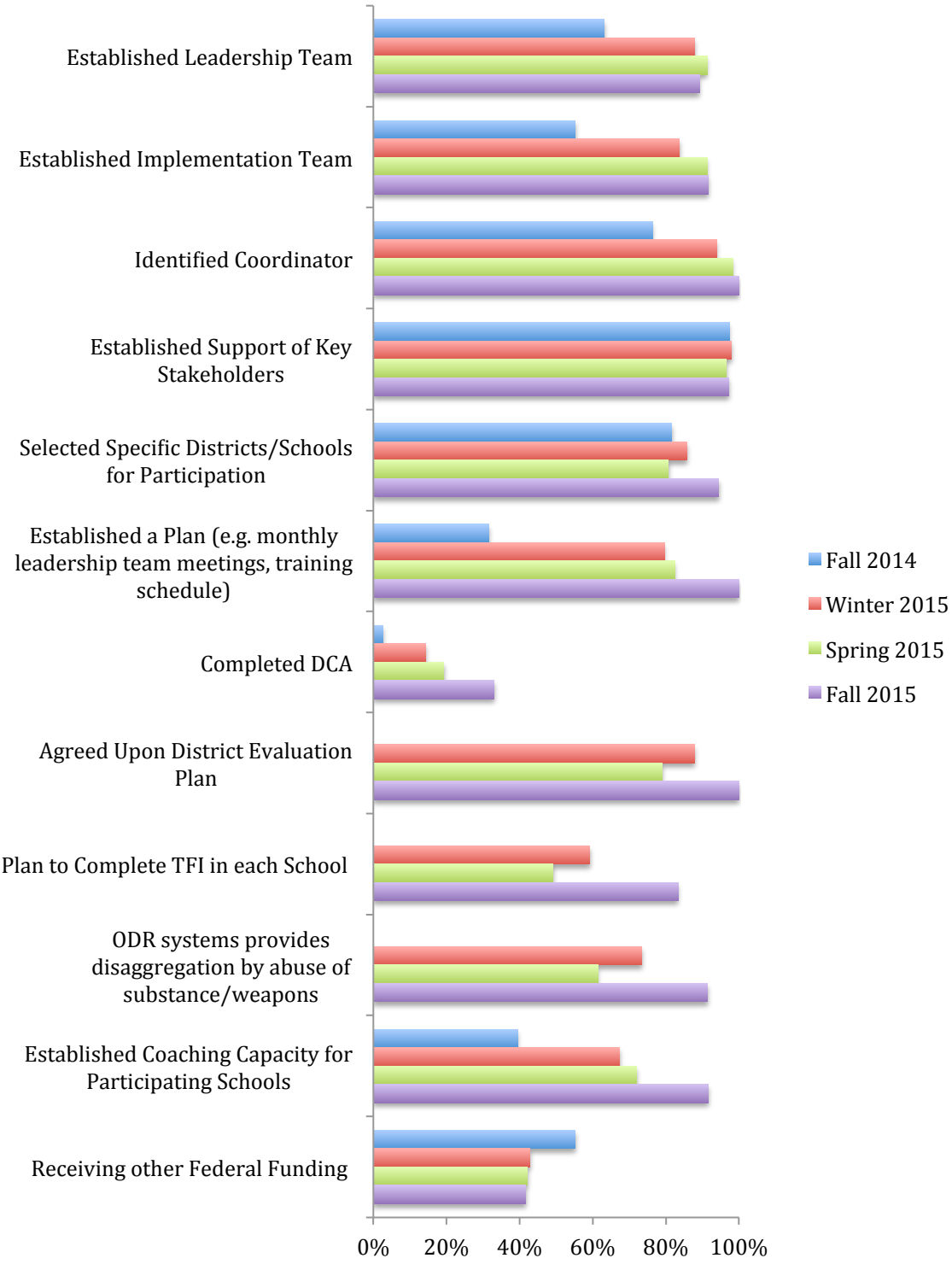
## Results

In the following charts, we compare the results of the initial implementation survey (Nov 2014), the midyear implementation survey (Feb/Mar 2015), the end of year survey (May/June 2015), and the Fall 2015 survey in the areas of implementation steps taken and evaluation plan components. Additionally, a summary is provided of practices included in SEA and LEA implementation plans is provided.

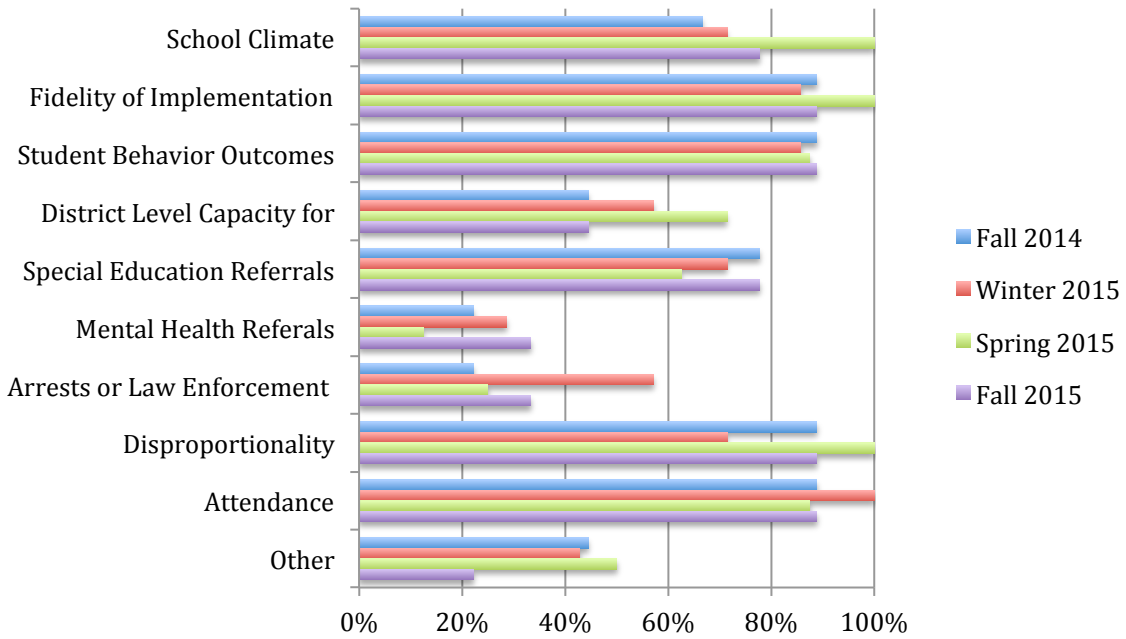


\*Annual question only

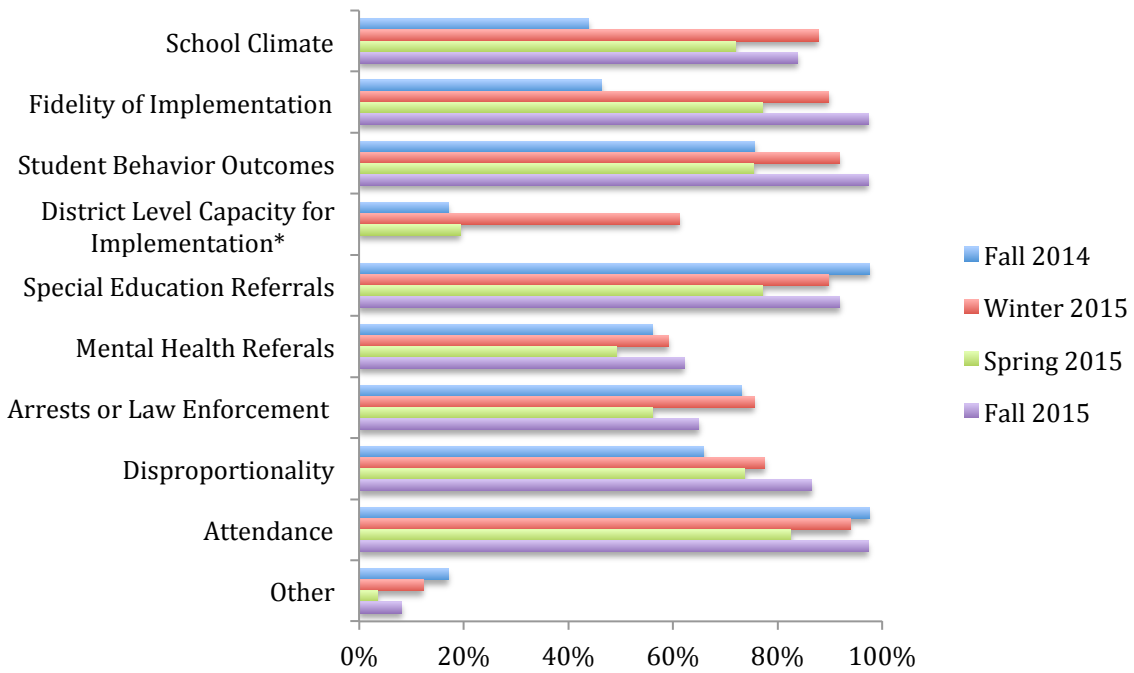
# LEA Implementation Steps



## SEA Evaluation Plan Includes

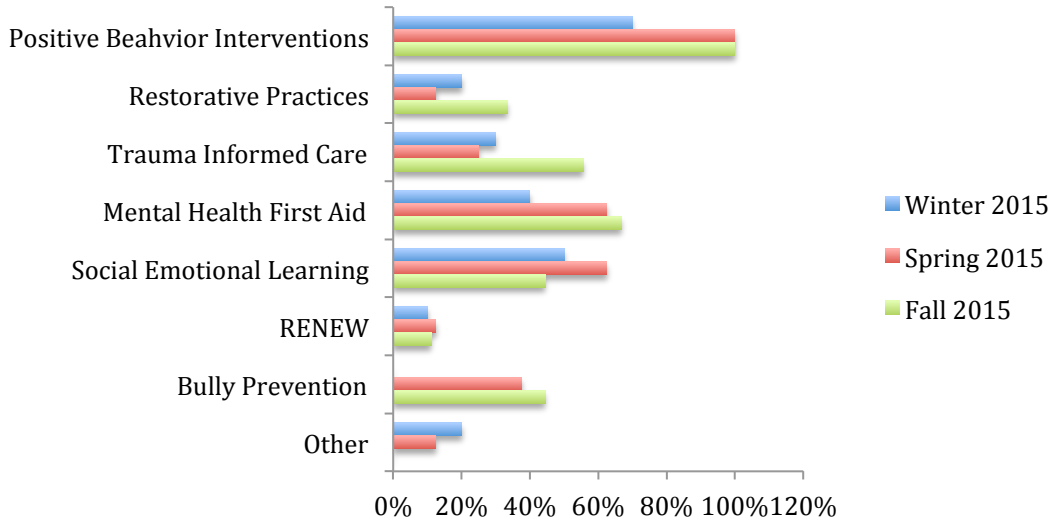


## LEA Evaluation Plan Includes



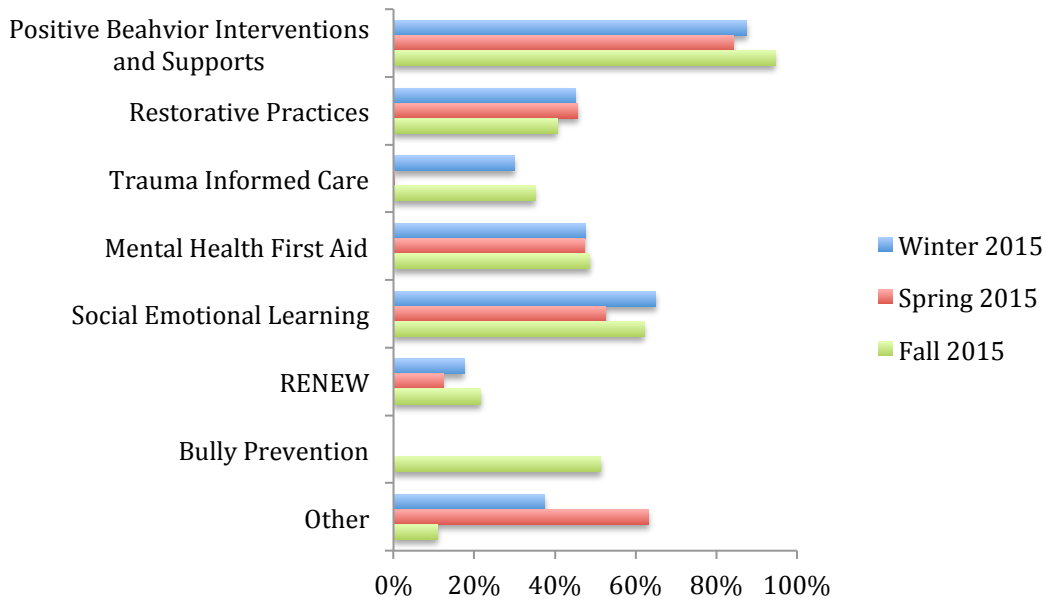
\* In year 2 question asks if DCA has been implemented

## SEA Implementation Plan Includes



\* Other includes: SEL Standards

## LEA Implementation Plans Include



## Summary and Next Steps

### General Observations

Based on survey results from 2014-2015 and Fall 2015, we conclude with a few general observations and :

1. SCTG projects have established many of their organizational structures and procedures to manage their grant activities (e.g., action plans, hiring personnel, securing stakeholder commitments).
2. SCTG project teams are being established to coordinate implementation; however, integration and alignment questions need to be addressed.
3. SCTG projects have identified primary practices and are organizing internal and external providers to deliver professional development.
4. SCTG projects are developing schedules and organizing resources for full implementation of practices.
5. SCTG projects require meaningful prompts and reinforcers to maintain their response rates to survey requests.
6. SCTG projects may require TA supports commensurate with their capacity to maintain adequate implementation progress.

### Program Specific Observations

In addition to general observations across all SCTG recipients we provide more specific observations for SEAs and LEAs.

#### SEA

1. SEA projects have in the past six months made major strides in (a) selecting Districts/Schools who will be part of the project, (b) establishing leadership teams, (c) establishing implementation teams.
2. 90% of SEA projects now have a specified evaluation plan and a formal schedule for meeting and guiding the project.
3. Projects are continuing to build (a) district leadership teams, and (b) establishing local training/coaching capacity
4. Projects are choosing not to use the SCA to assess state capacity.

#### LEA

1. The last six months have seen dramatic improvement in LEA projects with respect to (a) Implementation team selection, (b) Hiring of project coordinators, (c) Establishing an implementation plan, and (d) selecting schools for the project.
2. Nearly all projects now have a well-defined evaluation plan that will measure both (a) fidelity of MTSS implementation and (b) impact on students/families in terms of disaggregated ODR data
3. Projects have made improvement in establishing the coaching support needed to achieve initial and sustained implementation.

### Next Steps

The TA center is using survey data across sites to inform the selection of webinar and conference session topics. Individual TA providers are using survey data to support the development of individualized action plans within sites. In addition to informing the organization of TA supports, the implementation survey (which will be collected 3 times annually) will be used to track the progress of LEAs and SEAs as they work to develop MTBF implementation capacity.